

Successfully
preparing students
for the cognitive,
global
and digital world



2007
2008

Mercer Island School District
Annual Report

Compiled in January, 2009

Superintendent's Message

We are pleased to present the Mercer Island

School District's Annual Report for 2007-2008.

It was, once again, a very successful year of teaching and learning in our district. I am immensely grateful to our teachers and staff members, hard-working students, committed families and our wonderfully supportive community for making this success possible. As you will read in these pages, our students continue to excel on state and national tests, our teachers continually challenge themselves to grow and learn in a demanding profession, and our community of parents, school board members, volunteers, and business people consistently go above and beyond to further our goal of preparing students for success in their future. It was a tremendous honor to be officially selected on March 28, 2008 as superintendent after a year of serving in the interim role. It is an exciting challenge to work with this extraordinary community in imagining what is possible in the highest achieving public school system in the state of Washington. Thank you for making 2007-2008 a seamless year of transition and a year of new possibilities for our district.

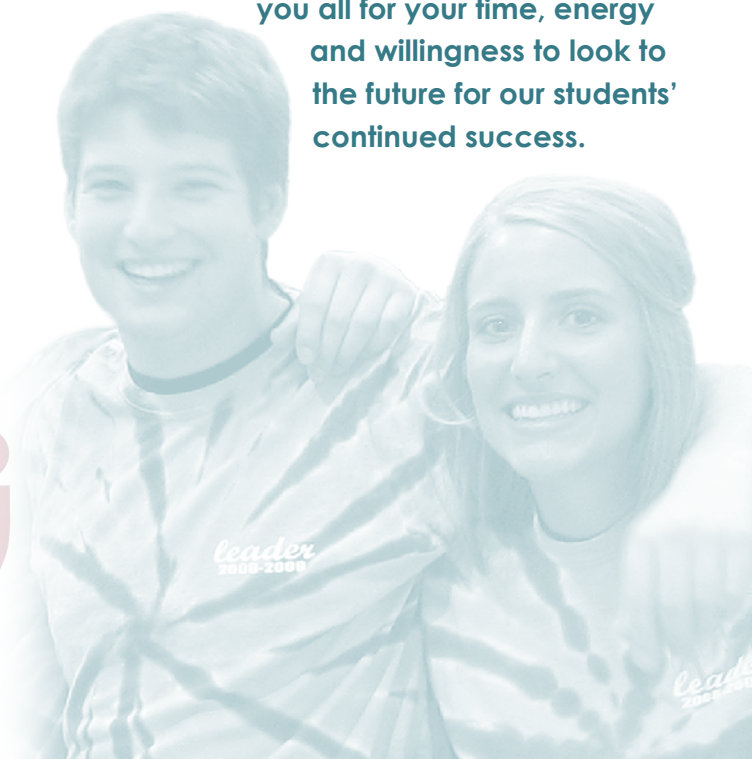


One of our most significant moments last year was the adoption of the new 2020 Vision: Successfully preparing students for the cognitive, global and digital world.

This vision is the result of many hours of conversations with the Mercer Island Schools Foundation's Really Big Idea Committee, School Board, staff and parents, as well as visits from futurists and educators Daniel Pink and Dr. Yong Zhao. Thanks to your yes votes on the Capital Projects and Technology levy, on-going support of the Mercer Island Schools Foundation and PTA, and continuing exploration of new funding partnerships, we are well positioned to shape the course of our work well into the future. I am confident that with 21st century tools for learning, we will not only embrace new ways of teaching and learning, but our students will continue to do well on state and national measures for success. Thank

you all for your time, energy and willingness to look to the future for our students' continued success.

Simply 
Exceptional



Outperforming district: Council of Chief State School Officers and Standard & Poors has identified Mercer Island as an "Outperforming District" for performing at a level that significantly exceeds statistical expectations.

High graduate percentage: Manhattan Institute study ranked Mercer Island High School #1 nationally for the percentage of students who graduate "on time." 94.9% of students who enter the ninth grade at MIHS graduate in four years. Seattle area schools: 73%; WA state schools: 66%.

Best at college preparation: The Seattle Times School Guide rated MIHS the #1 public high school in Washington for quality of preparation for students.

High college attendance: 92% of MIHS graduates go on to colleges and universities.

Chess State championships: MIHS Chess team and West Mercer Chess team.

Scholastic Awards: MIHS Wind Ensemble was selected as the WIAA 3A Washington State Academic Champions for 2006-2007 for having the highest GPA. MIHS was awarded the 3A WIAA Scholastic Cup in 2006.

MIHS DECA Team: Has consistently sent approximately 30 students to state and 12-15 to international level competitions over the past 10 years.

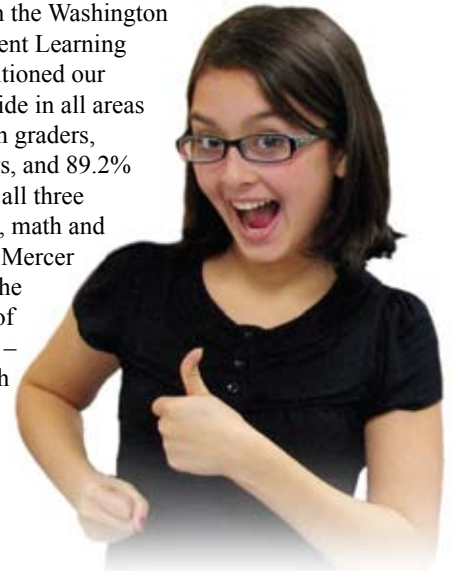
Seattle's Fifth Avenue Theatre High School Musical Theatre Awards: 2004-2005 Candide Outstanding Direction, five additional nominations. 2005-2006 The Cradle Will Rock; Outstanding Educational Impact, Outstanding Performance by an Ensemble Cast, Outstanding Direction, Outstanding Musical Direction, five other nominations.

2 Blue Ribbon Schools: Mercer Island High School (2006) and Islander Middle School (2003) have been designated "Blue Ribbon Schools" by the US Department of Education.

Athletic Awards 2007-2008: Boys Golf – KingCo Champs (Tyson Peters, Coach of the Year), 4th place State; Boys Water Polo, League Title, State Champions; Girls Swim, & Dive, KingCo, District Champs, 2nd Place AAA State Meet; Volleyball, KingCo Champs, 2nd Place Districts; Boys Basketball, KingCo Champs; Boys Swim & Dive, KingCo, District, AAA State Champs, State Academic Champs; Wrestling, State Academic Champs; Boys Soccer, KingCo Champs, 3rd Place AAA State; Boys Lacrosse, League title, 2nd place State; Girls Lacrosse, 3rd Place State; Girls Water Polo, 2nd Place State Finals

Highlights of 2007-2008

- Aggregate scores on the Washington Assessment of Student Learning (WASL) scores positioned our students first statewide in all areas tested: 86.8% of 4th graders, 81.4% of 7th graders, and 89.2% of 10th graders met all three standards in writing, math and reading. In science, Mercer Island schools had the highest percentage of students at standard – 5th grade 75.4%, 8th grade 82.6%, 10th grade 82%.
- School Board adopted the new 2020 Vision: *Successfully preparing students for the cognitive, global and digital world.*
- The Mercer Island community voted to approve the 4-year Capital Projects Levy for facilities and technology 2008-2012
- 13 staff members are National Board Certified teachers
- Superintendent's office launched "E-Connections," an email communications tool that showcased 26 different stories of teaching and learning in 2007-2008
- New courses developed for implementation in 2008-2009: 9th grade Global History, 8th grade Gifted Program, 6th grade Health
- MISD offered over 20 Professional Learning Communities for staff. Some of these include: Working with *All Kinds of Minds*, K-5 Standards-Based Report Card, Differentiating Instruction in the K-5 classroom
- MISD began planning for a capital improvement bond to be placed before voters in the coming years
- District undertook voluntary Title IX review of athletic programs to ensure gender equity in sports
- Superintendent offered open enrollment spaces to 31 non-resident students in 2007-2008.
- Among the 388 graduating seniors in the class of 2008 at Mercer Island High School, 12 are National Merit Finalists, 29 are National Merit Commended Scholars and 174 received Washington State Honors awards for ranking in the top 10% of Washington state's high school graduating class. 170 students received the President's Award for Educational Excellence for earning a GPA of 3.5 or higher.



Exceptional Focus

District Improvement Planning

During the 2007-2008 year, improvement planning in the Mercer Island School District continued to focus on “building professional learning communities” in a standards-based teaching and learning system, a plan to be completed by 2012. At the same time, the District Instructional Planning Team of teachers and administrators formed the 2020 Vision Sub-Committee to begin the work of integrating the district’s new vision into the existing plan. The work included:

- New curriculum frameworks for secondary social studies
- New programs for K-5 social studies
- Revised secondary language arts and social studies courses
- Secondary science program review and evaluation
- State leadership standards in most Career and Technology Education courses (CTE). State requirements met
- On-going work on the K-5 Standards-Based Reporting System
- On-going work on technology as a tool for learning in K-12 classrooms
- Learning Support Program K-5 in preparation for Response to Intervention (RTI) requirements
- English Language Learners program review

2007-2008 Results

- K-5 Standards-Based Reporting System: teachers met in Professional Learning Communities to discuss and refine core competencies, benchmarks and assessments for each curricular area
- Student performance on the WASL SAT, PSAT, ACT and the number of National Merit Semi-Finalists suggests that instruction in MISD classrooms K-12 meets or exceeds state and nationally recognized standards.
- New state-of-the art K-5 social studies curriculum and materials aligned with state standards were developed for implementation in 2008-2009.
- Coordinated learning support program for elementary students in reading.
- New 9th grade Global History course developed for implementation in 2008-2009.
- Redesigning middle school science program focused on environmental and global issues
- 8th grade Gifted Program developed. MISD now offers a 3-8 gifted education continuum
- New trimester system at Islander Middle School to include 6th grade Health Class (state requirement) developed for implementation in 08-09.
- AP Economics re-designed as a social studies credit
- New Pre-calculus textbooks.
- Mercer Island’s English Language Learners program review is confirmed that we are meeting the needs of students. The district is working on a staff development plan to provide more training for more teachers in English-language acquisition.

Exceptional Dedication

2007-2008 School Board

Pat Braman

Director District #1
Term of Office 2007-2011
Pat_Braman@misd.wednet.edu

Adair Dingle

Director District #4
Term of Office 2005-2009
Adair_Dingle@misd.wednet.edu

Lisa Strauch Eggers

Director District #3
Term of Office 2007-2011
lisa@leggerslaw.com

John DeVleming

Director District #2
Term of Office 2005-2009
John_DeVleming@misd.wednet.edu

Janet Frohnmayr

Director District #5
Term of Office 2007-2011
Janet_Frohnmayr@misd.wednet.edu



Our District

The Mercer Island School District is located on Mercer Island, a six square mile suburban community of 22,000 residents in the middle of Lake Washington, within a 10 minute drive to Seattle and Bellevue. The school district is one of 35 King and Pierce County school districts affiliated with the Puget Sound Educational Services District, a regional support educational agency.

The community has high expectations for the school district and has supported its maintenance and operations levy every year, as well as \$54 million in capital bonds to renovate all five schools. In 2008, the community voted to renew funding for facilities maintenance and technology through 2012.

Mercer Island students and teachers benefit from over \$1 million in annual donations to the PTA/PTSA's and the Mercer Island Schools Foundation, as well as the time and energy of countless volunteers serving on committees, planning fund-raising programs, coordinating field trips and assemblies, serving as art docents, general classroom volunteers, and many more activities.

Community, board members, and staff are committed to excellence in education for all students in the district and encourage thoughtful, articulated curriculum planning and enrichment activities that will prepare students for success in their future.

Mission

Mercer Island School District, in partnership with the community, commits to providing that all students will:

- Be prepared to thrive in life
- Progress academically, intellectually and personally;
- Graduate prepared to compete and succeed in post-secondary education and work; and
- Be inspired to contribute to society

2007-2008 District Demographics

(as of October 2007)

Enrollment

Total enrollment	4,022
Kindergarten	232
Grade 1	276
Grade 2	294
Grade 3	255
Grade 4	311
Grade 5	279
Grade 6	298
Grade 7	369
Grade 8	308
Grade 9	333
Grade 10	337
Grade 11	343
Grade 12	369
Running Start	18

Student Ethnicity

American Indian/	
Alaska Native	0.4%
Asian	19.1%
Black	1.0%
Hispanic	2.0%
White	76.9%
Multi-Racial	0.6%

Special Programs

Free or Reduced-Price meals	
(May 2008)	1.9%
Special Education	
(May 2008)	10.0%
Transitional Bilingual	
(May 2008)	1.7%

Classroom Teachers

MIHS	92
IMS	54
Island Park	34
Lakeridge	36
West Mercer	40
TOTAL	256

Average years of experience:
12.7 years

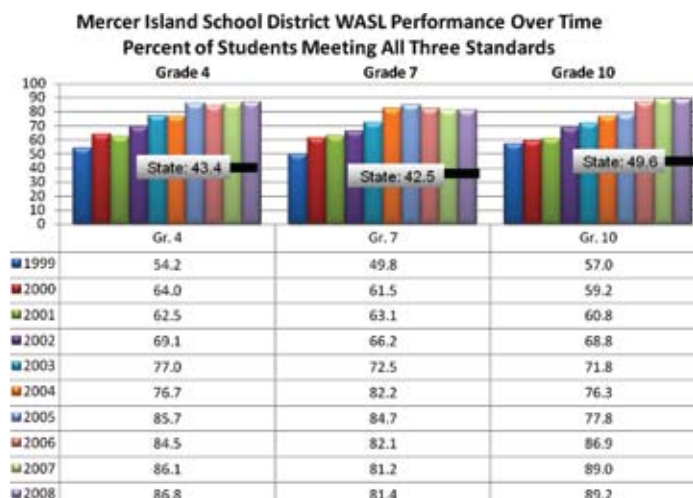
73.6% of our teachers hold
Master Degrees and 12 are
National Board Certified.

Exceptional Results

Mercer Island School District Assessment Program 2007-2008

The Mercer Island School District uses a broad range of formative and summative assessments designed to inform teachers of student progress and performance, determine appropriate student placement and make intervention decisions. These assessments include, but are not limited to, the state required Washington Assessment of Student Learning (WASL), Iowa Basic Skills Tests (ITBS), CogAT abilities assessments, SAT, Advanced Placement (AP), ACT, Developmental Reading Assessment (DRA), TerraNova, and classroom-based formative and summative assessments.

Mercer Island students continuously demonstrate outstanding achievement on these multiple measures. Over the years more students are taking and passing AP exams, more students are reaching standard on the WASL at multiple grade levels and within multiple subjects, and more students are performing higher than ever before. The charts displayed are just a sampling of some of the performance indicators that demonstrate this high achievement by our students.



Performance on the Reading and Math WASL in Grades 3, 5, 6, 8, and 10

Student performance in the third year of testing in these grade levels continues to be strong. Slightly lower math scores in grades 5 and 8 are due to higher numbers of special populations enrolled.

Grade 3

Reading Math

2006.....90.9 86.7
2007.....95.9 95.5
2008.....92.1 93

Grade 5

Reading Math Science

2006.....94.492.4 65.3
2007.....94.6 94 78.5
2008.....96.186.9 75.7

Grade 6

Reading Math

2006.....90.486.3
2007.....89.384.8
2008.....93.990.8

Grade 8

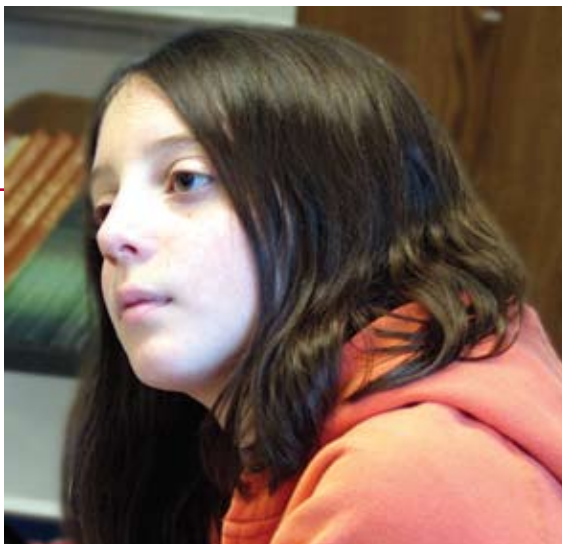
Reading Math Science

2006.....93.9 89.3 85.2
2007.....92.1 89.7 84.8
2008.....88.2 86 82.6

Grade 10

Reading Math Science Writing

2006.....97.4 85.1 74.9 95.5
2007.....93.9 85.4 81.3 95.3
2008.....95.6 86.1 82.0 93.5



Other Assessments

Scholastic Aptitude Test (SAT) and ACT Assessment

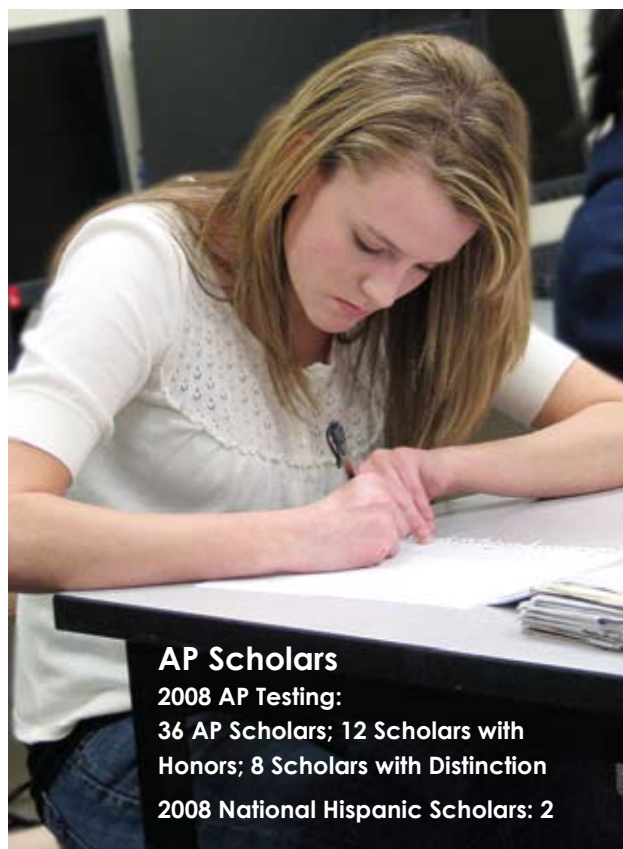
While the SAT and ACT are not required tests, most Mercer Island High School students take one or both of these for college applications.

SAT 1

# Tested	Class	Mean Scores	Mid-50%	State	National
296	2005	Verbal	613	550-670	508
		Math	635	570-700	520
338	2006	Math	607	540-680	518
		Critical Reading	577	510-640	503
		Writing	572	500-640	497
301	2007	Math	611	550-670	515
		Critical Reading	589	530-650	502
		Writing	581	510-650	494
328	2008	Math	614	550-680	533
		Critical Reading	584	520-640	526
		Writing	573	520-640	509

ACT

# Tested	Class	Mean Composite	State	National
124	2005	26.5	22.5	20.8
122	2006	25.7	22.9	21.1
145	2007	26.8	23.1	21.2
210	2008	26.2	23.1	21.1



AP Scholars

2008 AP Testing:

36 AP Scholars; 12 Scholars with Honors; 8 Scholars with Distinction

2008 National Hispanic Scholars: 2

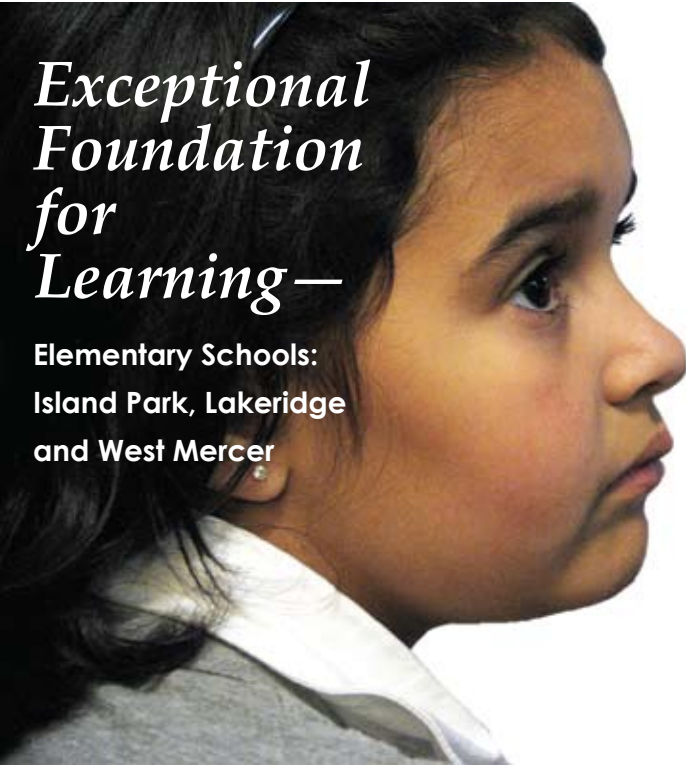
National Merit Scholars

Class	Finalists	Commended Scholars
2006	13	20
2007	15	13
2008	12	29
2009	12 Semifinalists	31

AP Test Results

Year	#Tested	Tests Taken	AP Scores 3 and above
2006	288	437	311
2007	232	402	293
2008	328	572	393





Exceptional Foundation for Learning—

**Elementary Schools:
Island Park, Lakeridge
and West Mercer**

Curriculum

Our schools use district-adopted curriculum as the foundation for instructional programs. Teachers frequently integrate material from several disciplines to make learning more meaningful to students. All of our teachers participate in staff development activities outside of their work day and/or school year.

Technology

To live, learn and work successfully in an increasingly complex and information-rich society, students must be able to use technology effectively. With an effective educational setting, technology can enable students to become capable information technology users; information seekers, analyzers, and evaluators; problem solvers and decision makers; creative and effective users of productivity tools; communicators, collaborators, publishers, and producers; informed, responsible and contributing citizens.

In March 2008, the community voted to renew funding for facilities maintenance and technology through 2012, providing all schools with the necessary equipment and software to integrate technology lessons with academic classes. The Mercer Island Schools Foundation provided additional funding for teacher training.

Counseling Services

Each elementary school has at least one on-site counselor who provides a variety of counseling services to individuals, groups, families, and staff. These positions are made possible by funds provided by Mercer Island Youth and Family Services, City of Mercer Island, and the Mercer Island School District.

Volunteer Opportunities

Elementary school PTAs are very active and sponsor family activities such as: International Week (Island Park), Reflections contest, Ice Cream Socials, Book Fairs, and parent education evenings. Volunteer opportunities include: room parents, art docents, fund-raising, classroom help, field trip assistance, special project work, field days, and International Week. Each school PTA is proud of a nearly 100% membership rate.

The school's Parent Advisory Councils elect new members on a rotating basis for 2-year terms. Elementary schools have 4-8 parent representatives for various grade level groups (i.e K/1, 2/3, 4/5, and Support Services, including ESL, Title IV/LAP, Special Education). These Councils are a representative group of administrators and parents who meet monthly to discuss school issues such as: instructional programs, organization of school and classrooms, allocation of resources, schools' response to district-wide issues, and/or operational requirements of the school building.



Island Park Elementary



Island Park is located in the middle of the island at 5437 Island Crest Way. Principal Nancy Loorem led a teaching staff of 34 who served 515 students in 2007/08. The school is host for the district's English Language Learners (ELL) program and offers an Extended Resource Room (ERR) for students with special learning needs. Other special programs include Special Education Resource

Room, Counseling, LAP (remedial reading), tuition-based foreign language program, technology integrated classrooms, student council, after school clubs, and before school choir. Island Park is known as a leader in the recycling/composting movement. Every day at lunch, students dispose of food waste that eventually becomes organic compost for gardens. The school is building their own raised-bed garden as a component of the science curriculum.



Island Park HIGHLIGHTS

- 92.4% of 3rd grade students met standards in reading
- 91.4% of 3rd grade students met standards in math
- 95.6% of 4th grade students met standards in reading
- 92.3% of 4th grade students met standards in writing
- 93.5% of 4th grade students met standards in math
- 96.7% of 5th grader students met standards in reading
- 88.2% of 5th graders met standards in math
- 75.8% of 5th graders met standards in science

Philosophy and Mission "Building for the Future"

The Island Park Elementary School Community guides all students to achieve their highest academic potential while nurturing their social and emotional well being.

Lakeridge Elementary



Lakeridge is located at the south end of the island at 8215 SE 78th. Principal Ralph Allen led a staff of 36 teachers who served 538 students in 2007/08. The school hosts the district's Autism Spectrum Program. Other special programs include Special Education Resource Room, Counseling, LSP (remedial reading), tuition-based foreign language program, technology-integrated classrooms,

student council, after school clubs, and before school choir. The entire Lakeridge community has embraced the Autism Spectrum program, integrating these students into general education classrooms as much as possible. All students benefit in learning about compassion, understanding, tolerance and diversity.



Lakeridge HIGHLIGHTS

- 92.6% of 3rd grade students met standards in reading
- 92.6% of 3rd grade students met standards in math
- 97.9% of 4th grade students met standards in reading
- 91.5% of 4th grade students met standards in math
- 88.2% of 4th grade students met standards in writing
- 94.4% of 5th grade students met standards in reading
- 86.1% of 5th grade students met standards in math
- 73.6% of 5th grade students met standards in science

Mission Statement "Exploring today, preparing for tomorrow"

Our mission is to give all students at Lakeridge the opportunity to gain knowledge, grow in wisdom, develop confidence, and become creative, compassionate and critical thinkers, and to ensure that all children, regardless of level of ability or individual needs, will have the opportunity to reach for, achieve and extend their potential in a changing world.

West Mercer Elementary



West Mercer Elementary is located on the north end of the island at 4141 81st Avenue SE. Principal Pat Blix led a staff of 40 who served 582 students in 2007/08. The school is host for the district's Gifted Education program for 3rd, 4th and 5th grade students. Other special programs include Special Education Resource Room, Counseling, LSP (remedial reading), a tuition-based foreign language program, student council, after school clubs, and before school choir.

West Mercer is particularly proud of their inner courtyard, a Northwest native plant garden and outdoor classroom funded by the Rotary Club of Mercer Island, with matching funds, supplies and labor from the greater school community.



West Mercer HIGHLIGHTS

- 91.4% of 3rd grade students met standards in reading
- 94.6% of 3rd grade students met standards in math
- 91.7 % of 4th grade students met standards in reading
- 91.7% of 4th grade students met standards in writing
- 89.3% of 4th grade students met standards in math
- 96.6% of 5th grade students met standards in reading
- 86.4% of 5th grade students met standards in math
- 76.3% of 5th grade students met standards in science

Mission Statement

- *To create a place where every student learns as much and as well as he/she possibly can.*
- *To create a place where every teacher teaches as well as he/she possibly can.*
- *To create a place where every student, staff member, parent, and volunteer want to be because they feel safe, competent, valued, and know that it makes a positive difference that they are, in fact, a part of West Mercer.*

Elementary Schools Improvement Planning 2007-2008

Academics

Last year all three elementary schools implemented the K-5 Standards-Based Report Card. This new reporting system is aligned with the Washington State Essential Academic Learning Requirements and Grade-Level Expectations and is designed to provide a greater depth of information about each child's learning needs. The schools also adopted Learning Support Programs in reading and developed a new social studies program.

Citizenship and Personal Development

Each school has an on-going commitment to support student-centered programs designed around Citizenship and Personal Development.



Islander Middle School:

A “Blue Ribbon School”



Islander Middle School is located at the south end of Mercer Island, at 8225 SE 72nd Street. Principal Mary Jo Budzius led a staff of 54 teachers who served 980 6th, 7th and 8th grade students in 2007/08.

Curriculum

In a six-period day, students at the 6th, 7th and 8th grade levels are required to take the four core subjects of language arts, social studies, science and mathematics. These subjects are integrated as often as possible. At the sixth-grade level, two-teacher teams present the four core subjects to two groups of students. Sixth graders also take Spanish and the state-required health class and a fine arts rotation. Seventh and eighth-grade students participate in two hour language arts/social studies block classes and are teamed whenever possible. The school offers a wide range of electives, after school clubs and athletics.

Technology

Thanks to the success of the Technology Levy in March 2008, IMS continues to provide the necessary technology for integrating technology in the middle school curriculum. The Mercer Island Schools Foundation provided funding to train teachers in how to integrate technology into the curriculum.

Counseling Services

Each of three full time counselors follows a class of students through their three years of middle school. Two additional counselors, funded by the City of Mercer Island and Mercer School District through Mercer Island Youth and Family Services provide support to students and families.

Volunteer Opportunities

IMS welcomes parent and community member involvement in many areas of the school community. The very active Islander PTSA has over 980 members, representing 100% of Islander families. The school's Site Council includes one parent representative for each grade level, grade level and elective teacher representatives, parapro and office staff representatives, IMS administrators, and a PTSA board representative. A MISD School Board liaison also attends monthly meetings.

Site Council meetings include discussion and recommendations on building related issues. The Site Council work focuses on deliberation and decision-making related to school improvement planning, implementation and evaluation.

Islander HIGHLIGHTS

- 93.9 % of 6th graders met standard in reading
- 90.8% of 6th graders met standard in math
- 91.3 % of 7th graders met standard in reading
- 85.8% of 7th graders met standard in math
- 88.5% of 8th graders met standard in reading
- 86.3% of 8th graders met standard in math
- 82.9% of 8th graders met standard in science

Islander MISSION

A place to learn, a place to grow.

- *We seek to meet the unique needs of students in the middle grades.*
- *We work to be a caring community where all members feel safe to take the necessary risks to grow.*
- *We strive for high quality in all we do.*
- *We value diversity.*
- *We believe that respect, cooperation, and kindness provide the foundation of our Islander community.*



Mercer Island High School

A “Blue Ribbon School”



Mercer Island High School is located at the north end of Mercer Island, at 9100 SE 42nd Street. Principal John Harrison led a staff of 92 members who served 1,406 students in grades 9-12 in 2007/08.

Curriculum

MIHS offers a strong academic program that includes 7 class periods of 50 minutes beginning at 8:00 am and ending at 3:00 p.m. A standard school day is six periods, although students may choose to take seven classes. Classes meet four times a week with one day being a 105 minute “double-period block.” In addition to regular course offerings, the school provides a variety of honors, advanced placement classes, and classes for students who travel at a slower pace.

Crest Learning Center is Mercer Island High School’s alternative program. The staff of nine adults works to create a learning environment which meets the needs of a diverse population of about 115 students. The curriculum at Crest is designed to focus on the development of cognitive powers, creativity, and essential skills. Subject material is approached from an integrated perspective and hands-on activities are a part of nearly every topic that is studied. Mornings at Crest revolve around a two-hour integrated course which emphasizes language arts, history, current events, and visual arts.

In the afternoon, students concentrate on activities that explore mathematics, science, horticulture, health, vocational skills, physical education and visual arts. Crest also provides a unique opportunity for students to take courses independently.

Technology

MIHS has a combination of computer labs and carts of mobile computer equipment for student use. Standard equipment is refreshed and pilot equipment purchased through the levy approved in March 2008. Training in application skills and curriculum technology is ongoing and was funded by the Mercer Island Schools Foundation.

Student Involvement

80-85% of the student body is active in some kind of co-curricular activity, ranging from athletics to the arts, to student-run clubs and organizations. MIHS is a designated High Tech Learning Center offering a wide variety of career and technology courses.

Counseling

Five full time counselors serve the needs of a college-bound population and also provide guidance for those students interested in vocational education. Two additional counselors focus on issues such as drugs and alcohol, and serve as a resource for community services.

Volunteer Opportunities

MIHS welcomes parent and community member involvement in many areas of the school community. Contact the school office or PTSA if you would like to help with: Career speakers, parent newsletter, sports booster clubs, registration, counseling center, classroom guests, music booster committee, Fine Arts Showcase, office help, or book room. The MIHS Site Council has 30 members: 15 staff, 8 students, 6 parents, and 1 school board member.

All but the parents are chosen for 1-year terms; parents serve 2. The council meets monthly to provide a forum for discussion and recommendations as appropriate on site related issues. The PTSA has over 900 members.



College Placement

92% of the graduates of the Class of 2008 had plans to continue their education, 85% at a 4-year institution and 6% at a 2-year school. Of the college bound students, 48% went out of state. Students from the class of 2008 are attending over 110 different colleges and universities across the nation and the world. Some of the schools are: Amherst, American Musical and Dramatic Academy, Barnard, Bates, Boston U, Bowdoin, Bryn Mawr, Brown, BYU, Carnegie Mellon, Cal Poly, Chapman, Claremont



McKenna, Colby, Colgate, Colorado College, Columbia, Concordia, Dartmouth, DePaul, Duke, Elon, Fashion Institute of Design and Merchandising, Gage Academy of Art, George Washington U, Georgetown, Gonzaga, Gordon, Hamilton, Harvard, Hilsdale, Hofstra, Hope, Johns Hopkins, Kenyon, Lafayette, Linfield, Long Island U, Loyola Marymount, Macalester, Marymount, McGill, Middlebury, MIT, Mount Holyoke, Northeastern, Northwestern, New York University, Oberlin, Occidental, Pacific Lutheran, Parsons School of Design, Pitzer, Princeton, Pratt Institute, Reed College, Rochester Inst of Technology, Rocky Mt College, Santa Clara University, Sarah Lawrence, Scripps, Seattle U, Seattle Pacific U, Smith, Stanford, St. Mary's, Sweet Briar, Trinity College of Dublin, Ireland, Tufts, UCLA, U Chicago, U Colorado, U Denver, U Michigan, U Minnesota, U Redlands, U Portland, USD, USC, USF, US Naval Academy, Union, Victoria U of New Zealand, Wake Forest, Washington U in St. Louis, Wheaton, Whitman, Willamette, Williams and Yale in addition to many out of state public and the 6 Washington Public Colleges.

Other student's plans include: Gap year in Israel, Coast Guard, travel/work/gap year



High School HIGHLIGHTS

- 89.2% of 10th grade students met 3 of 3 standards on the WASL
- 95.6% met standard on the Reading test
- 93.5% of students met standard on the Writing test
- 86.1% of students met standard on the Math test
- 82.0% of students met standard on the Science test

Purpose

The purpose of Mercer Island High School is to provide students with challenging educational activities and experiences that encourage students to reach their individual potential.



Special Education

In 2007-2008, 10 percent of the MISD K-12 student population qualified for one or more special education services. Special education is a federal and state mandated program. Funding for this mandate, however, is insufficient, requiring school districts to support the shortfall out of their general operating budgets. Last year this shortfall was over \$650,000.

We are committed to all students on the continuum of learning and offer the following programs in our district:

Preschool at West Mercer:

Students with disabilities such as blindness, autism, health impairments, developmental delays or communication delays are integrated with typically developing peers.

Resource Rooms at every school:

Students with specific learning disabilities and health impairments are most commonly seen in the Resource Rooms. At the elementary level students usually receive 30 minutes or more per day of additional instruction. At the secondary level students attend one or more classes in the Resource Room. Instruction is most often in reading, writing and math.

Extended Resource Room (ERR) at Island Park:

This program is for students who need to have most or all of their instruction in a separate classroom. Significant changes to content, methods and/or pacing of instruction are made. These students are also integrated into general education classes as much as possible.

Spectrum Program at Lakeridge:

MISD offers this program for students diagnosed with autism who need services beyond the Resource Room program. Some students are served in the general education classroom for much of the school day; some need more services in a separate classroom.

Room 115 at IMS:

Students in Room 115 receive most or all of their instruction in a separate classroom. The focus is on life skills and functional academics.

Life-Skills program at MIHS:

This program is for students who need most instruction in a separate classroom. The focus is on life-skills, functional academic skills and pre-vocational/vocational training.

Transition program for students from age 18-21:

This program is for students who need instruction and guidance in preparing for living in the adult world (vocational training, life-skills, recreation, leisure and mobility). Students spend most of the day in the community and at work sites.

Giving to Our Schools

The Mercer Island School District gratefully accepts your donations to our schools through the PTA/PTSA's or the Mercer Island Schools Foundation, both 501c(3) non-profit organizations. The PTA/PTSA's support individual school enrichment activities including: field trips, assemblies, Great Books, art docents, Artist in Residence programs, teacher grants and discretionary funds, and classroom activities. The Mercer Island Schools Foundation supports curriculum improvement at every grade level in every classroom in the district, as well as teacher initiated enrichment grants. Both organizations are critical in helping the district achieve desired outcomes for students.

By far, the most important thing you can give is interest in your child's education. If you have questions, comments, ideas, or concerns, call the school offices, or follow the links to individual school web sites via the district site at www.misd.wednet.edu.



Mercer Island School District

Grants & Commendations

- Washington State Teacher Assistance Grant (TAP)
- NEVAC Partner School – National Science Foundation
- Siemens Advanced Placement High School Award

Mercer Island School District Financials

The Mercer Island School District is a public-supported organization governed by Washington state laws and regulations. Major sources of funding include: the state of Washington basic education allocation that equates to \$4,765 per student per year and local levy funds that equate to \$2,225 per student per year.

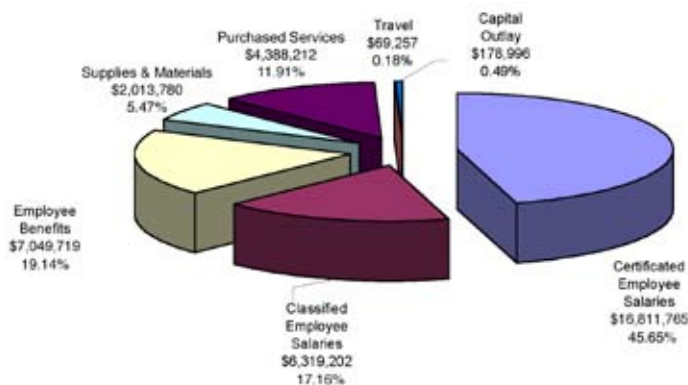
In 2007, MI voters approved a 4 year maintenance and operations levy. Approximately 23.1% of the annual property tax bill is dedicated to local schools.

Other sources of funding include: state special purpose, local non-tax (i.e. fees, lunches, donations, rentals and investment earnings), federal grants.

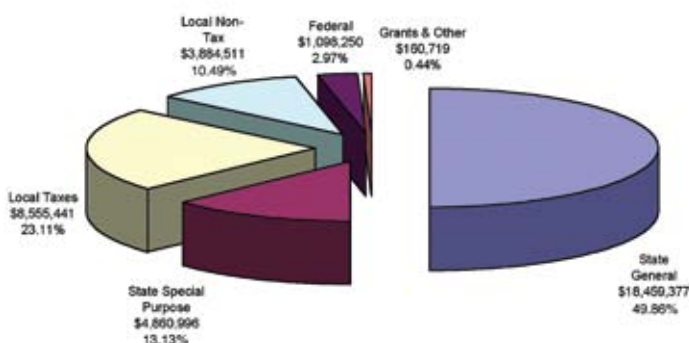
Major expenses include salaries and benefits, supplies and materials, purchased services, travel, and capital outlay. The Mercer Island School District is one of a very few districts in Washington to receive a AA+ bond rating from Standard & Poors and Moodys.

The yearly budget process begins in January with an initial enrollment projection review with principals and concludes with an open-to-the-public budget hearing and adoption meeting in July.

Total Expenditures = \$36,830,931



Total Revenue = \$37,019,294



Mercer Island Schools Foundation

Classroom Enrichment	\$75,606
Extra Curricular	62,984
Fine Arts.....	34,935
Language Arts	39,322
Mathematics	27,767
Science.....	42,371
Social Studies.....	105,956
Special Education/ESL	34,528
Teacher Development/	255,972
Student support	
Technology	28,544
World Languages	9,107
Total.....	\$717,092

MISF (Mercer Island Schools Foundation): community donations provide funding for curriculum improvements in all areas, classroom enrichment support, and technology.

PTA/PTSA (Parent/Teacher/Student Assoc): funds field trips, assemblies, teacher grants, artist-in-residence, and other cultural and enrichment activities. Island Park Elementary held a special auction to raise funds for additional paraprofessionals.

Elementary and Secondary Education Act (ESEA) – No Child Left Behind

The Mercer Island School District has met all requirements of the No Child Left Behind Act and has reported Adequate Yearly Progress under ESEA. To view the MISD report card and/or a School Report Card, go to <http://reportcard.ospi.k12.wa.us>. Under Select List, click District and highlight Mercer Island. Then click on Search. Scroll down on the page and choose a school or program whose report you would like to see. Currently our annual reports include the state requirements listed in RCW 28A.655.110, as well as ESEA Report Card elements not available on the OSPI website.

Nondiscrimination Statement

The Mercer Island School District complies with all federal rules and regulations and does not discriminate on the basis of national origin, creed, color, race, religion, gender, sexual orientation, parental status, marital status, or physical, mental or sensory disability. This holds true for all students who participate in educational programs and/or extracurricular school activities.

Published by Mercer Island School District
Prepared by Vanessa Adams and Marion Mohler,
MISD Office of Communications
Printed by Consolidated Press, February 2009

District Contact Information

District Web Site: www.misd.k12.wa.us

Individual school web sites are accessible through the scroll down menu on the main site. All addresses are Mercer Island, WA 98040

Mercer Island School District

Dr. Gary Plano, Superintendent
4160 86th Avenue SE
206 236-3300 • Personnel 206 236-3318 • FAX 206 236-3333

Mercer Island High School & Crest Learning Center

John Harrison, Principal
9100 SE 42nd
206 236-3345 phone • 206 236-3358 fax

Islander Middle School

MaryJo Budzius, Principal
8225 SE 72nd
206 236-3413 phone • 206 236-3408 fax

Island Park Elementary

Dr. Nancy Loorem, Principal
5437 Island Crest Way
206 236-3410 phone • 206 230-6251 fax

Lakeridge Elementary

Ralph Allen, Principal
8215 SE 78th
206 236-3415 phone • 206 230-6232 fax

West Mercer Elementary

Rich Mellish, Principal
4141 81st Avenue SE
206 236-3430 phone • 206 230-6043 fax



Mercer Island School District

*Preparing students to
thrive in life, progress
academically and
personally, succeed
in post-secondary
education and work,
and be inspired to
contribute to society.*

Simply Exceptional
Mercer Island School District
2007-2008 ANNUAL REPORT

4160 86th Avenue SE
Mercer Island, WA 98040

Non-Profit Org.
US Postage
PAID
Permit #19
Mercer island, WA

ECRWSS

Residential Customer