

Setting the Course for Mercer Island Schools

Superintendent's Community Advisory
October 30, 2019



Welcome to the 2019-20 School Year



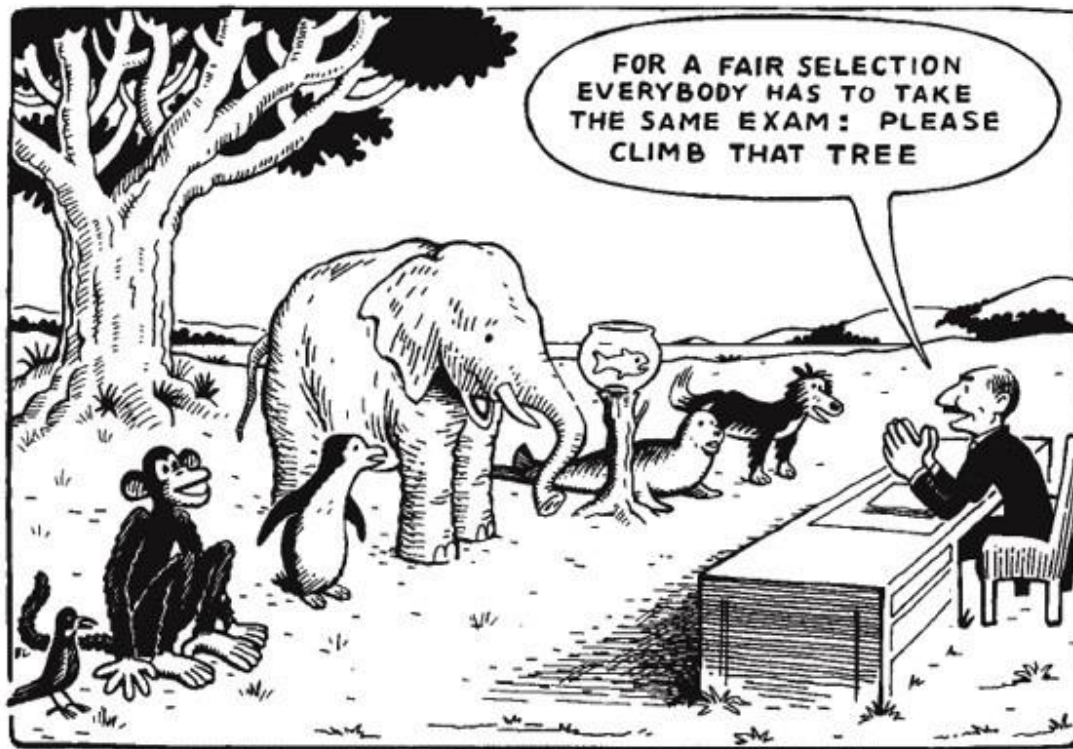


I believe...
we are all a
work in
progress.





I believe...
that every day
brings
opportunities
to learn and to
do something
meaningful.





I believe...
character is
doing the right
thing even
when it may
cost more than
you want to
pay.





I believe...
character is
doing the right
thing even
when it may
cost more than
you want to
pay.





I believe...

you should
never look
down on
someone
unless you're
reaching down
to help them.





I believe...
the surest road
to happiness is
good
relationships.

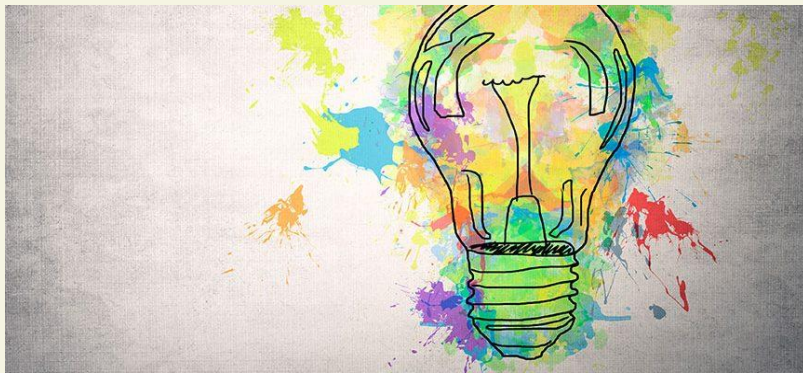




I believe...
kindness really
matters.



Values – Vision – Mission



Values – Vision – Mission



Students are the priority.

We believe in:

- supporting the whole child
- creating inclusive and equitable learning settings
- ensuring our school communities are safe and supportive
- providing rigorous and challenging learning

Values – **Vision** – Mission



Inspiring our students to be lifelong learners as they create their futures.



Values – Vision – **Mission**



The District will foster learning by engaging students in thinking critically, solving problems creatively, and working collaboratively.



Values, Vision, Mission



MERCER ISLAND

SCHOOL DISTRICT

**STUDENTS
ARE THE
PRIORITY**

VALUES

WE BELIEVE IN:

- Supporting the whole child.
- Creating inclusive and equitable learning settings.
- Ensuring our school communities are safe and supportive.
- Providing rigorous and challenging learning.

MISSION

The District will foster learning by engaging students in thinking critically, solving problems creatively, and working collaboratively.

VISION

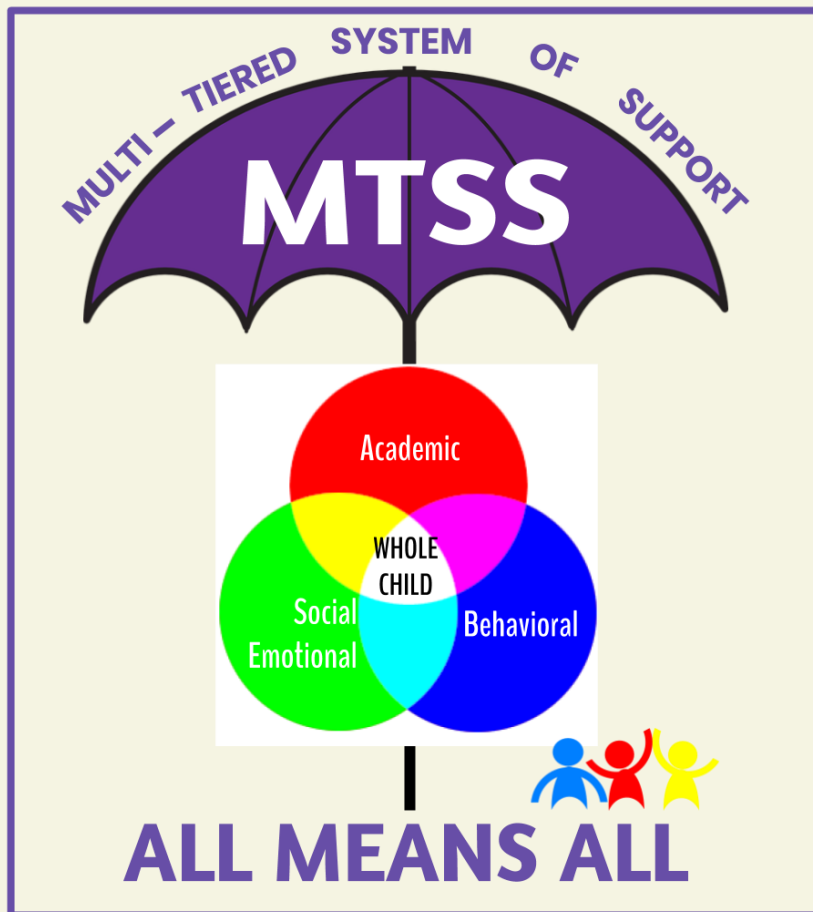
Inspiring our students to be lifelong learners as they create their futures.

Teaching & Learning Focus



**It's the heart of
what we do and
why we entered
our profession**

Three Core T & L Priorities



Professional Learning



Develop and sustain professional learning that has a clear focus and is:

- student centered
- focused on the whole child, including social emotional, and deep learning
- utilizes best practices in support of quality teaching and learning for each student
- collaborative
- educator driven

Multi-Tier Systems of Support



- Implement a child-centered system of tiered supports that is inclusive and educates all students at all levels including:
- Interventions for core subject areas (RTI)
- Social-emotional needs (PBIS)

Equity and Inclusion



- Assure equity and inclusion for each student that recognizes students' voice through continued review and adjustments to the District's:
 - Programs/Services
 - Practices
 - Policies

Fiscally Sustainable Funding

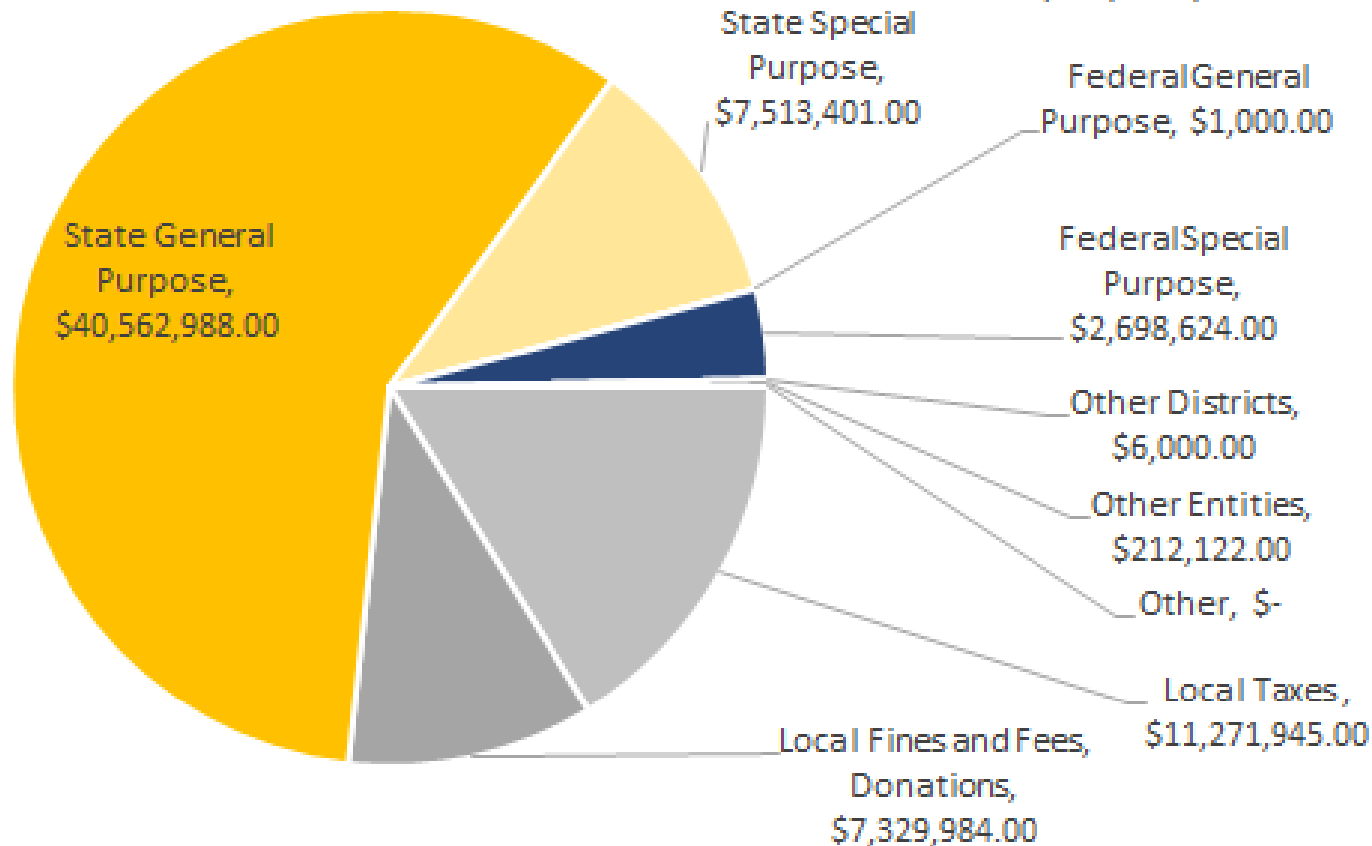


- Identify sustainable funding sources for all MISD personnel
- Commit existing and expected resources to support:
 - Enhanced professional learning
 - Other program refinements

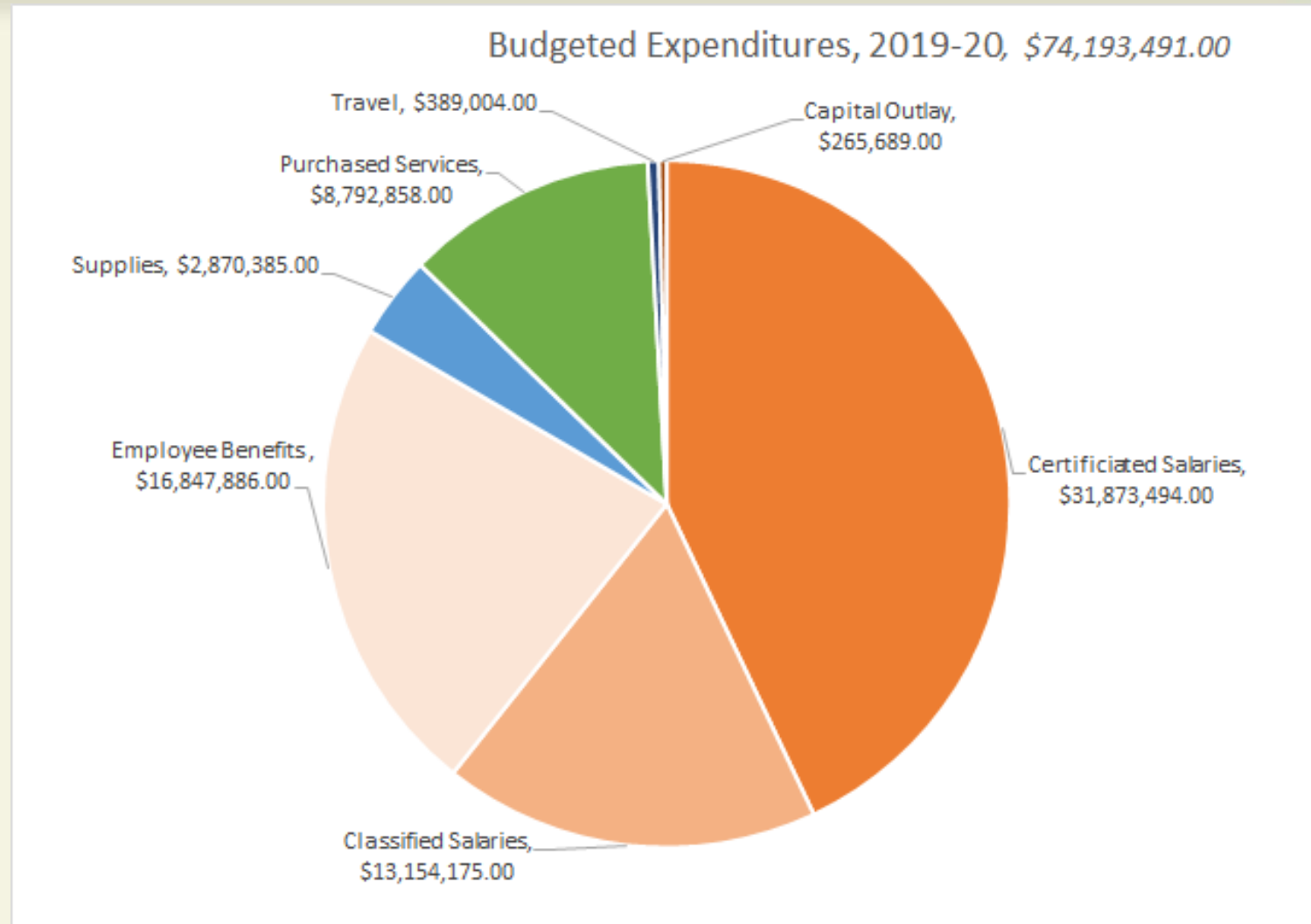
Revenue Sources



Budgeted Revenues, School Year 2019-20, \$69,596,064



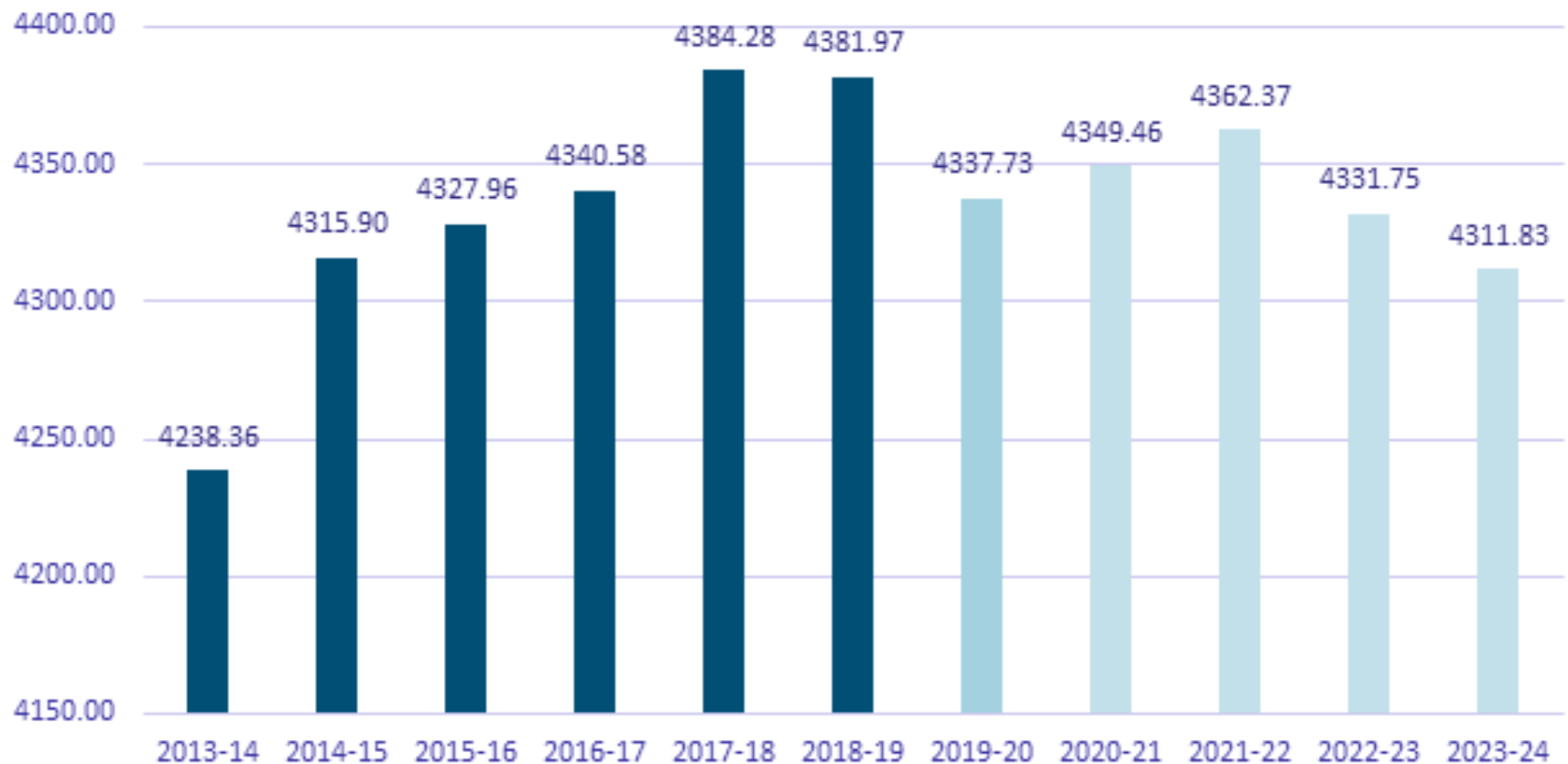
Expenditures



Enrollment trends



Enrollment History and Projections



Facilities Planning



- Completed a facilities survey in 2018-2019 to evaluate status of current facilities:
 - age and condition of facility
 - size and capacity of facility
 - safety and security for students and staff
- 2019-2020, developing a Long Range Master Plan for future facilities needs

Current Facilities



- Lakeridge, Island Park and West Mercer Elementary schools, built in 1953, 1956 and 1964, respectively. Northwood Elementary was constructed in 2015-16.
- Islander Middle School, originally constructed in 1958. In 2015-16, approximately half of the educational space was replaced with a new building.

Current Facilities



- Mercer Island High School, originally constructed in 1955, received extensive renovations in 1996-97. A new music addition was completed in 2012, and three small additions were added in 2014, to each of the classroom wings. The 2014 additions provided four STEM and six general purpose classrooms.

Facilities Planning Committee



- MISD has formed a Facilities Planning Committee (FPC) to help consultant, Mahlum Architects, develop a long-range facilities master plan that provides for MISD's academic programs and initiatives, and future enrollment projections.
- The FPC includes a broad section of the community.

Thank You!



- Questions?